

## 产品特点

介质：金属化聚丙烯薄膜  
 外壳：塑料外壳封装  
 内部灌封：树脂填充 (UL94 V-0)

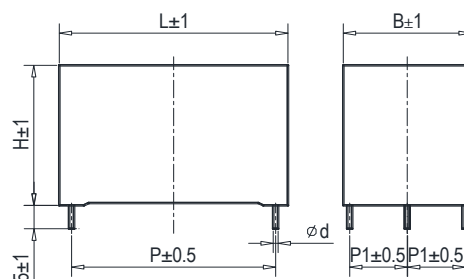
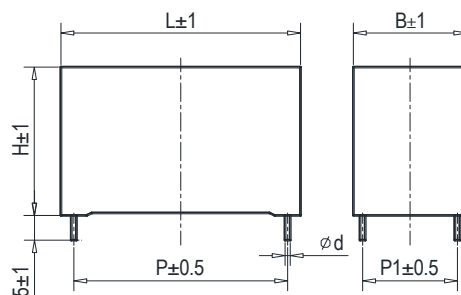
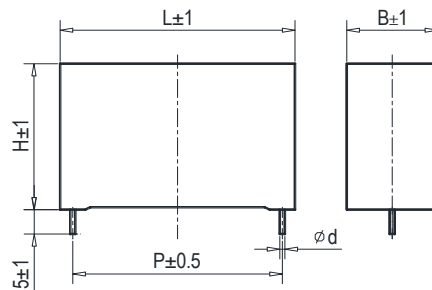
## 电气特性

工作温度：-40 至 +105 °C  
 容量范围：6.0 至 90μF  
 额定电压：700 至 1100 VDC  
 容量偏差：±5% , ±10%  
 损耗因素： $\leq 1.0 \times 10^{-3}$  @ 100 Hz, 20±5°C  
 预期寿命：100,000 小时 @  $U_n$ , 70 °C(热点温度)  
 极间耐压：1.5 $U_n$  (DC) @ 10s, 20±5°C  
 极壳耐压：(1.5 $U_n$ +1000)VAC, 最小 3000VAC (10s,50Hz)  
 (IR×Cn) 30000s (不超过 30GΩ),  
 绝缘电阻：100VDC (20±5°C), 1 分钟



## 应用

逆变器 DC 滤波 HEV、EV (OBC) 马达驱动



## 电压等级

Un @ 85°C	500V	600V	700V	800V	900V	1000V	1100V	1200V
Un @ 105°C	365V	435V	510V	580V	655V	730V	800V	875V

## 特性参数

订货代码	容量 ( $\mu\text{F}$ )	尺寸 (mm)						Du/dt ( $\text{V}/\mu\text{s}$ )	$I_{\text{Max}}@60^\circ\text{C}$ @10KHz (A)	ESR@1.0KHz ( $\text{m}\Omega$ )
		L	B	H	P	P1	d			
<b>Un 700VDC , Us 1050V , Ur 200V</b>										
SHB-700-15-2F	15	42.5	22	30	37.5		1.2	21	9	8.0
SHB-700-22-2F	22	42.5	28	37	37.5		1.2	21	11	5.6
SHB-700-22-4F	22	42.5	28	37	37.5	10.2	1.2	21	11	5.4
SHB-700-30-2F	30	42.5	30	45	37.5		1.2	21	12	4.2
SHB-700-30-4F	30	42.5	30	45	37.5	20.3	1.2	21	14	4.0
SHB-700-35-2F	35	42.5	33	45	37.5		1.2	21	12	3.7
SHB-700-35-4F	35	42.5	33	45	37.5	20.3	1.2	21	16	3.6
SHB-700-45-2G	45	57.5	30	45	52.5		1.2	14	12	5.4
SHB-700-45-4G	45	57.5	30	45	52.5	20.3	1.2	14	14	5.2
SHB-700-55-2G	55	57.5	35	50	52.5		1.2	14	12	4.5
SHB-700-55-4G	55	57.5	35	50	52.5	20.3	1.2	14	17	4.4
SHB-700-90-4G	90	57.5	42.5	56	52.5	20.3	1.2	14	22	3.8
<b>Un 900VDC , Us 1350V , Ur 250V</b>										
SHB-900-10-2F	10	42.5	22	30	37.5		1.2	30	8	9.5
SHB-900-15-2F	15	42.5	28	37	37.5		1.2	30	11	6.5
SHB-900-15-4F	15	42.5	28	37	37.5	10.2	1.2	30	11	6.0
SHB-900-20-2F	20	42.5	30	45	37.5		1.2	30	12	5.0
SHB-900-20-4F	20	42.5	30	45	37.5	20.3	1.2	30	13	4.5
SHB-900-22-2F	22	42.5	33	45	37.5		1.2	30	12	4.6
SHB-900-22-4F	22	42.5	33	45	37.5	20.3	1.2	30	14	4.1
SHB-900-30-2G	30	57.5	30	45	52.5		1.2	20	12	6.4
SHB-900-30-4G	30	57.5	30	45	52.5	20.3	1.2	20	13	5.9
SHB-900-40-2G	40	57.5	35	50	52.5		1.2	20	12	4.9
SHB-900-40-4G	40	57.5	35	50	52.5	20.3	1.2	20	17	4.4
SHB-900-55-4G	55	57.5	42.5	56	52.5	20.3	1.2	20	22	3.0
<b>Un 1100VDC , Us 1650V , Ur 300V</b>										
SHB-1100-6-2F	6	42.5	22	30	37.5		1.2	39	7	12.9
SHB-1100-10-2F	10	42.5	28	37	37.5		1.2	39	10	8.0
SHB-1100-10-4F	10	42.5	28	37	37.5	10.2	1.2	39	10	7.5
SHB-1100-14-2F	14	42.5	30	45	37.5		1.2	39	12	5.8
SHB-1100-14-4F	14	42.5	30	45	37.5	20.3	1.2	39	12	5.3
SHB-1100-15-2F	15	42.5	33	45	37.5		1.2	39	12	5.5
SHB-1100-15-4F	15	42.5	33	45	37.5	20.3	1.2	39	13	5.0
SHB-1100-22-2G	22	57.5	30	45	52.5		1.2	26	12	7.2
SHB-1100-22-4G	22	57.5	30	45	52.5	20.3	1.2	26	13	6.7
SHB-1100-25-2G	25	57.5	35	50	52.5		1.2	26	12	6.4
SHB-1100-25-4G	25	57.5	35	50	52.5	20.3	1.2	26	14	5.9
SHB-1100-40-4G	40	57.5	42.5	56	52.5	20.3	1.2	26	20	3.7

## 产品特点

介质：金属化聚丙烯薄膜  
 外壳：塑料外壳封装  
 内部灌封：树脂填充 (UL94 V-0)

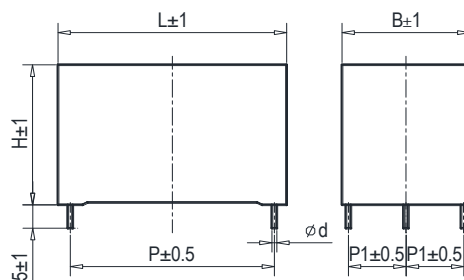
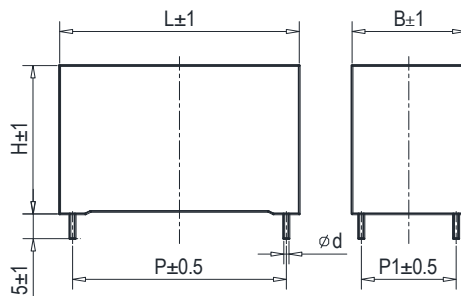
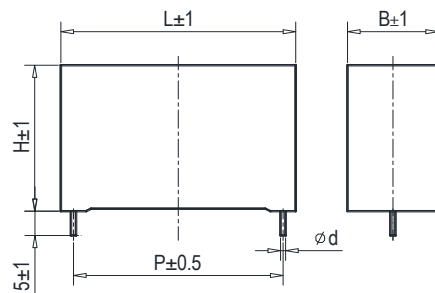
## 电气特性

工作温度：-40 至 +105 °C  
 容量范围：1.0 至 145 $\mu$ F  
 额定电压：700 至 1100 VDC  
 容量偏差： $\pm 5\%$ ,  $\pm 10\%$   
 损耗因素： $\leq 1.0 \times 10^{-3}$  @ 100 Hz, 20 $\pm 5$ °C  
 预期寿命：100,000 小时 @  $U_n$ , 70 °C(热点温度)  
 极间耐压：1.5 $U_n$  (DC) @ 10s, 20 $\pm 5$ °C  
 极壳耐压：(1.5 $U_n$ +1000)VAC, 最小 3000VAC (10s, 50Hz)  
 (IR $\times$ Cn) 30000s (不超过 30G $\Omega$ ),  
 绝缘电阻：100VDC (20 $\pm 5$ °C), 1 分钟



## 应用

DC 滤波 HEV、EV (OBC) 马达驱动



## 电压等级

Un at 85°C	500V	600V	700V	800V	900V	1000V	1100V	1200V
Un at 105°C	365V	435V	510V	580V	655V	730V	800V	875V

## 特性参数

订货代码	容量 ( $\mu\text{F}$ )	尺寸 (mm)						Du/dt ( $\text{V}/\mu\text{s}$ )	$I_{\text{Max}}@60^\circ\text{C}$ @10KHz (A)	ESR@1.0KHz ( $\text{m}\Omega$ )
		L	B	H	P	P1	d			
<b>Un 700VDC , Us 1050V , Ur 150V</b>										
SHB-700-3.0-2VB1	3.0	31	9	18	27.5		0.8	30	4	25.8
SHB-700-4.0-2VB1	4.0	31	11	20	27.5		0.8	30	4	19.9
SHB-700-6.0-2VB1	6.0	31	13	22	27.5		0.8	30	5	13.8
SHB-700-8.0-2VB0	8.0	31	15	24.5	27.5		0.8	30	5	10.7
SHB-700-10-2VB1	10	31	17	28	27.5		0.8	30	5	8.8
SHB-700-15-2VB1	15	31	18	33	27.5		0.8	30	5	6.4
SHB-700-17-4VB1	17	31	22	31	27.5	10.2	0.8	30	10	5.6
SHB-700-22-4FB1	22	42.5	22	30	37.5	10.2	1.2	21	11	6.7
SHB-700-40-4FB1	40	42.5	28	37	37.5	10.2	1.2	21	16	4.2
SHB-700-50-4FB1	50	42.5	30	45	37.5	20.3	1.2	21	18	3.6
SHB-700-60-4FB0	60	42.5	33	45	37.5	20.3	1.2	21	20	3.2
SHB-700-80-4GB1	80	57.5	30	45	52.5	20.3	1.2	14	20	3.9
SHB-700-100-4GB1	100	57.5	35	50	52.5	20.3	1.2	14	23	3.4
SHB-700-145-4GB1	145	57.5	42.5	56	52.5	20.3	1.2	14	23	2.7
SHB-700-145-6GB1	145	57.5	42.5	56	52.5	10.2	1.2	14	27	2.9
<b>Un 800VDC , Us 1200V , Ur 175V</b>										
SHB-800-2.0-2VB1	2.0	31	9	18	27.5		0.8	36	3	34.9
SHB-800-3.0-2VB1	3.0	31	11	20	27.5		0.8	36	4	24.0
SHB-800-4.0-2VB1	4.0	31	13	22	27.5		0.8	36	5	18.4
SHB-800-6.0-2VB1	6.0	31	15	24.5	27.5		0.8	36	5	12.8
SHB-800-8.0-2VB1	8.0	31	17	28	27.5		0.8	36	5	10.0
SHB-800-10-2VB1	10	31	18	33	27.5		0.8	36	5	8.2
SHB-800-12-4VB1	12	31	22	31	27.5	10.2	0.8	36	10	6.9
SHB-800-16-4FB1	16	42.5	22	30	37.5	10.2	1.2	28	10	8.0
SHB-800-25-4FB1	25	42.5	28	37	37.5	10.2	1.2	28	14	5.5
SHB-800-35-4FB1	35	42.5	30	45	37.5	20.3	1.2	28	17	4.3
SHB-800-42-4FB1	42	42.5	33	45	37.5	20.3	1.2	28	19	3.7
SHB-800-55-4GB1	55	57.5	30	45	52.5	20.3	1.2	16	18	4.7
SHB-800-75-4GB0	75	57.5	35	50	52.5	20.3	1.2	16	21	3.8
SHB-800-110-4GB0	110	57.5	42.5	56	52.5	20.3	1.2	16	23	2.9
SHB-800-110-6GB1	110	57.5	42.5	56	52.5	10.2	1.2	16	26	3.1
<b>Un 900VDC , Us 1350V , Ur 200V</b>										
SHB-900-1.5-2VB1	1.5	31	9	18	27.5		0.8	45	3	44.0
SHB-900-2.5-2VB1	2.5	31	11	20	27.5		0.8	45	4	27.3
SHB-900-3.3-2VB1	3.3	31	13	22	27.5		0.8	45	5	21.1
SHB-900-4.5-2VB1	4.5	31	15	24.5	27.5		0.8	45	5	15.9
SHB-900-6.0-2VB1	6.0	31	17	28	27.5		0.8	45	5	12.3
SHB-900-8.5-2VB1	8.5	31	18	33	27.5		0.8	45	5	9.1
SHB-900-10-4VB1	10	31	22	31	27.5	10.2	0.8	45	9	7.7
SHB-900-14-4FB1	14	42.5	22	30	37.5	10.2	1.2	32	10	8.5
SHB-900-25-4FB1	25	42.5	28	37	37.5	10.2	1.2	32	14	5.3
SHB-900-33-4FB1	33	42.5	30	45	37.5	20.3	1.2	32	17	4.3
SHB-900-35-4FB1	35	42.5	33	45	37.5	20.3	1.2	32	18	4.1
SHB-900-50-4GB1	50	57.5	30	45	52.5	20.3	1.2	20	18	4.8
SHB-900-65-4GB1	65	57.5	35	50	52.5	20.3	1.2	20	21	4.0
SHB-900-90-4GB1	90	57.5	42.5	56	52.5	20.3	1.2	20	23	3.2
SHB-900-90-6GB1	90	57.5	42.5	56	52.5	10.2	1.2	20	25	3.4

## 特性参数

订货代码	容量 ( $\mu\text{F}$ )	尺寸 (mm)						Du/dt (v/ $\mu\text{s}$ )	$I_{\text{Max}}@60^\circ\text{C}$ @10KHz (A)	ESR@1.0KHz (m $\Omega$ )
		L	B	H	P	P1	d			
<b>Un 1100VDC , Us 1650V , Ur 225V</b>										
SHB-1100-1.2-2VB1	1.2	31	9	18	27.5		0.8	45	3	51.5
SHB-1100-2.0-2VB1	2.0	31	11	20	27.5		0.8	45	3	31.9
SHB-1100-2.5-2VB1	2.5	31	13	22	27.5		0.8	45	4	25.9
SHB-1100-3.5-2VB1	3.5	31	15	24.5	27.5		0.8	45	5	19.0
SHB-1100-5.0-2VB1	5.0	31	17	28	27.5		0.8	45	5	13.7
SHB-1100-6.0-2VB1	6.0	31	18	33	27.5		0.8	45	5	11.7
SHB-1100-6.0-4VB0	6.0	31	18	33	27.5	10.2	0.8	45	5	11.7
SHB-1100-7.5-4VB1	7.5	31	22	31	27.5	10.2	0.8	45	9	9.4
SHB-1100-10-4FB1	10	42.5	22	30	37.5	10.2	1.2	32	9	10.5
SHB-1100-18-4FB1	18	42.5	28	37	37.5	10.2	1.2	32	13	6.4
SHB-1100-22-4FB0	22	42.5	30	45	37.5	20.3	1.2	32	15	5.5
SHB-1100-25-4FB0	25	42.5	33	45	37.5	20.3	1.2	32	16	4.9
SHB-1100-35-4GB1	35	57.5	30	45	52.5	20.3	1.2	20	16	5.9
SHB-1100-50-4GB1	50	57.5	35	50	52.5	20.3	1.2	20	20	4.5
SHB-1100-65-4GB1	65	57.5	42.5	56	52.5	20.3	1.2	20	23	3.7
<b>Un 1200VDC , Us 1800V , Ur 250V</b>										
SHB-1200-1.0-2VB1	1.0	31	9	18	27.5		0.8	50	2	58.5
SHB-1200-1.5-2VB1	1.5	31	11	20	27.5		0.8	50	3	39.9
SHB-1200-2.0-2VB1	2.0	31	13	22	27.5		0.8	50	4	30.4
SHB-1200-3.0-2VB1	3.0	31	15	24.5	27.5		0.8	50	5	20.9
SHB-1200-4.0-2VB1	4.0	31	17	28	27.5		0.8	50	5	16.0
SHB-1200-5.0-2VB1	5.0	31	18	33	27.5		0.8	50	5	13.1
SHB-1200-6.0-4VB1	6.0	31	22	31	27.5	10.2	0.8	50	8	11.0
SHB-1200-8.0-4FB1	8.0	42.5	22	30	37.5	10.2	1.2	38	8	12.2
SHB-1200-14-4FB1	14	42.5	28	37	37.5	10.2	1.2	38	12	7.5
SHB-1200-18-4FB1	18	42.5	30	45	37.5	20.3	1.2	38	14	6.1
SHB-1200-20-4FB1	20	42.5	33	45	37.5	20.3	1.2	38	15	5.6
SHB-1200-30-4GB1	30	57.5	30	45	52.5	20.3	1.2	30	16	6.2
SHB-1200-40-4GB1	40	57.5	35	50	52.5	20.3	1.2	30	19	5.0
SHB-1200-55-4GB1	55	57.5	42.5	56	52.5	20.3	1.2	30	23	3.9