

产品说明

Applications

NACL-1000B-S1 磁平衡霍尔电流传感器适用于对交流、直流、脉冲电流的隔离精确测量，测量时一次侧与二次侧间完全绝缘。

For the electronic measurement of currents: AC, DC, pulsed ... , with galvanic separation between the primary circuits and the secondary circuits.

产品优点 Advantages	产品应用 Applications	参照标准 Standards
高精度 Excellent accuracy	交流变频器 AC variable speed drives	GB/T 25119-2010 EN50178 EN50155
线性度好 Very good linearity	私服电机驱动 Servo motor drives	
低温漂 Low temperature drift	电池供电 Battery supplied applications	
宽频带 Wide frequency bandwidth	变流器/逆变器 converter /inverter	
快速响应 Optimized response time	UPS/SVG	

主要电气参数 Main electrical data

(@  $\pm I_{PN}$ ,  $T_A = 25^\circ\text{C}$ )

额定测量电流 $I_{PN}$	Primary nominal current	1000A
测量范围 $I_{PM}$	Primary current measuring range	$\pm 2100A$
电源电压 $V_c$	Supply voltage	DC $\pm (15\sim 24) \times (1 \pm 5\%)V$
电流消耗 $I_c(@\pm 24V)$	Current consumption	$\leq \pm 35mA + I_{SN}$
额定测量输出 $I_{SN}$	Output current	200mA
匝比	Conversion ratio	1:5000
负载电阻 $R_M$	Load resistance	@ $\pm 15V, \pm 1000A$ : 0 $\Omega$ ~23 $\Omega$ (70 $^\circ\text{C}$ ) 0 $\Omega$ ~19 $\Omega$ (85 $^\circ\text{C}$ ) @ $\pm 15V, \pm 1300A$ : 0 $\Omega$ ~7 $\Omega$ (70 $^\circ\text{C}$ ) @ $\pm 24V, \pm 1000A$ : 0 $\Omega$ ~63 $\Omega$ (70 $^\circ\text{C}$ ) 10 $\Omega$ ~61 $\Omega$ (85 $^\circ\text{C}$ ) @ $\pm 24V, \pm 2100A$ : 0 $\Omega$ ~6 $\Omega$ (70 $^\circ\text{C}$ )

精度 - 动态参数 Accuracy - Dynamic performance data

基本误差 $\delta_I(@I_{PN}, T_A=25^\circ\text{C})$	Overall Accuracy	$\leq \pm 0.4\%$
线性度 $\delta_L(@I_{PN}, T_A=25^\circ\text{C})$	Linearity error	$\leq \pm 0.1\%$
零点输出电流 $I_O(@I_p=0, T_A=25^\circ\text{C})$	Offset current	$\leq \pm 0.4mA$
零点温度漂移 $I_{OT}$	Temperature coefficient of $\delta_{Zt}$	$\leq \pm 0.8mA$

响应时间 $T_R(90\% \text{ of } I_{PN} \& di/dt > 50 \text{ A}/\mu\text{S})$	Step response time to 90 % of $I_{PN}$	$\leq 1\mu\text{S}$
--	--	---------------------

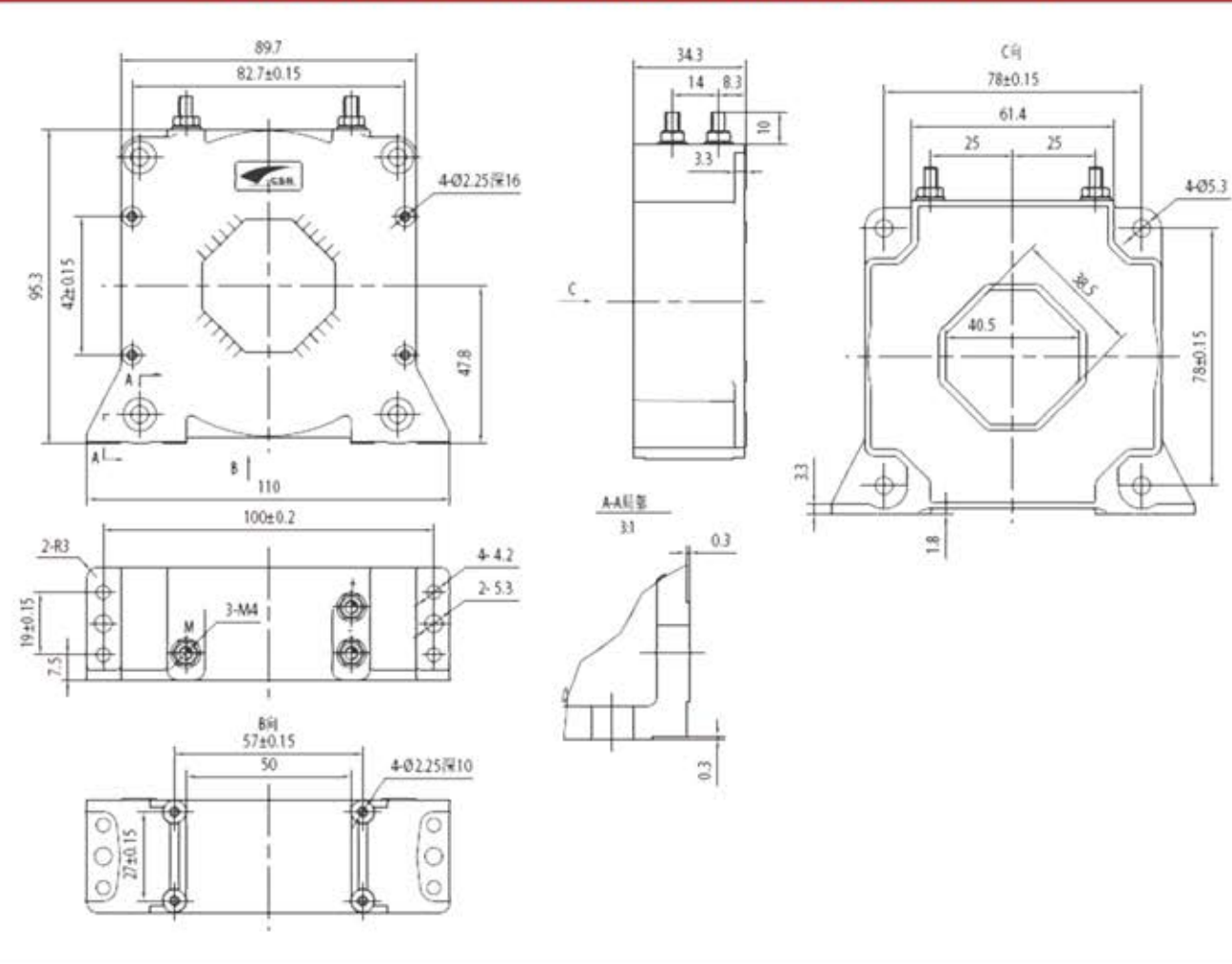
**一般数据 General data**

工作温度 $T_a$	Ambient operating temperature	-40~+85°C
储存温度 $T_s$	Ambient storage temperature	-45~+90°C
重量 $m$	Mass	$\leq 850\text{g}$

**绝缘耐压 Insulation coordination**

耐压	Voltage for AC insulation test, 50Hz, 1min	3.8kV
----	--	-------

**NACL.1000B-S1 电流传感器外形图 Dimensions NACL.1000B-S1 Series (in mm)**



**电气连接 Connection**

